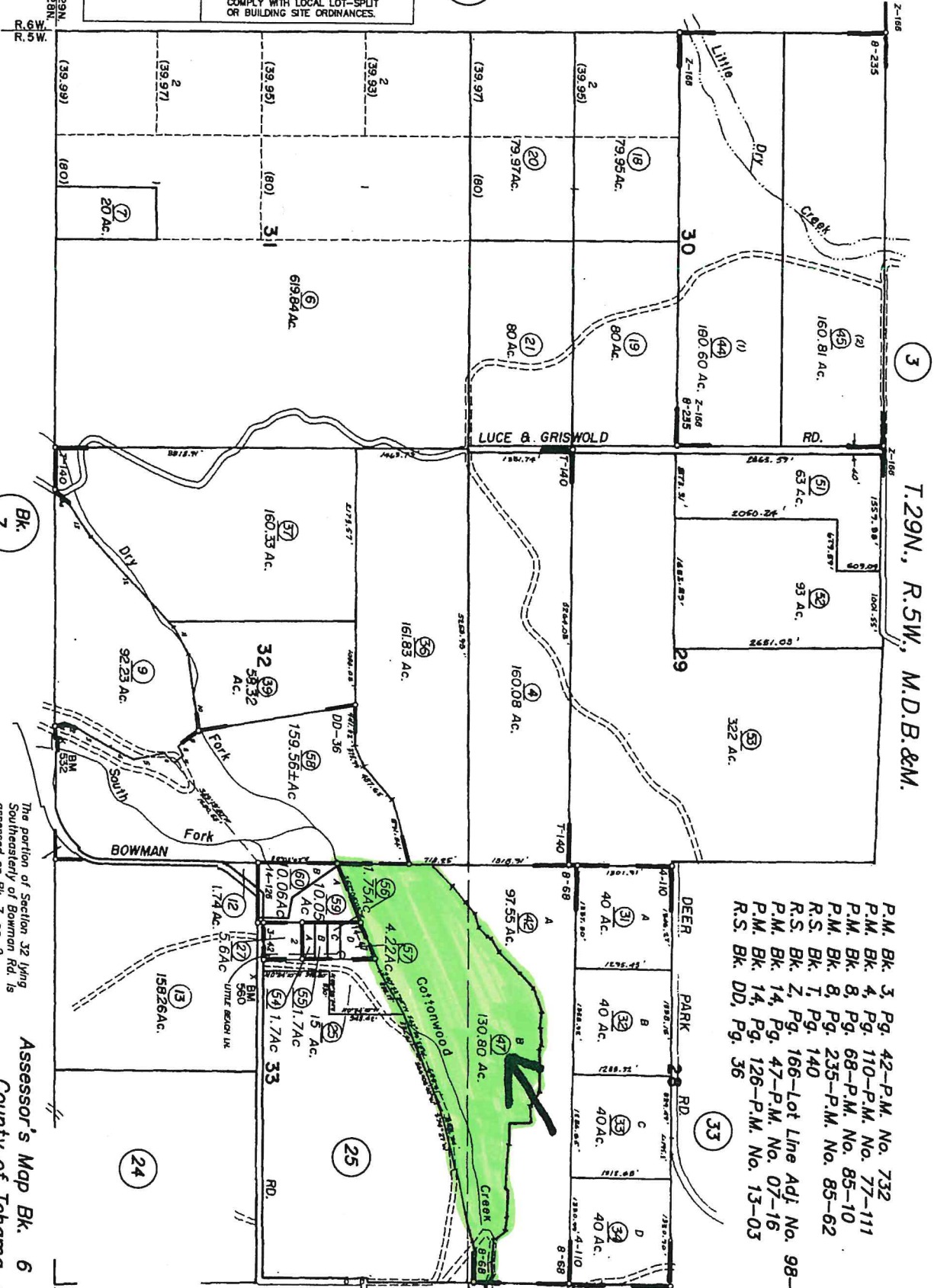


ASSESSOR'S CADASTRAL MAP

REVISED 06/15/2018

1. THIS MAP WAS PREPARED FOR ASSESSMENT PURPOSES ONLY.
2. NO LIABILITY IS ASSUMED FOR THE ACCURACY OF THE DATA SHOWN.
3. ASSESSOR'S PARCELS MAY NOT COMPLY WITH LOCAL LOT-SPLIT OR BUILDING SITE ORDINANCES.

Bk. 3



T.29N., R.5W., M.D.B.&M.

- P.M. Bk. 3, Pg. 42-P.M. No. 732
- P.M. Bk. 4, Pg. 110-P.M. No. 77-111
- P.M. Bk. 8, Pg. 68-P.M. No. 85-10
- P.M. Bk. 8, Pg. 235-P.M. No. 85-62
- R.S. Bk. T, Pg. 140
- R.S. Bk. Z, Pg. 166-Lot Line Adj. No. 98-2
- P.M. Bk. 14, Pg. 47-P.M. No. 07-16
- P.M. Bk. 14, Pg. 126-P.M. No. 13-03
- R.S. Bk. DD, Pg. 36



The portion of Section 32 lying Southeast of Bowman Rd. is assessed on Bk. 7, pg. 2.

Assessor's Map Bk. 6 -Pg. 04
County of Tehama, Calif.